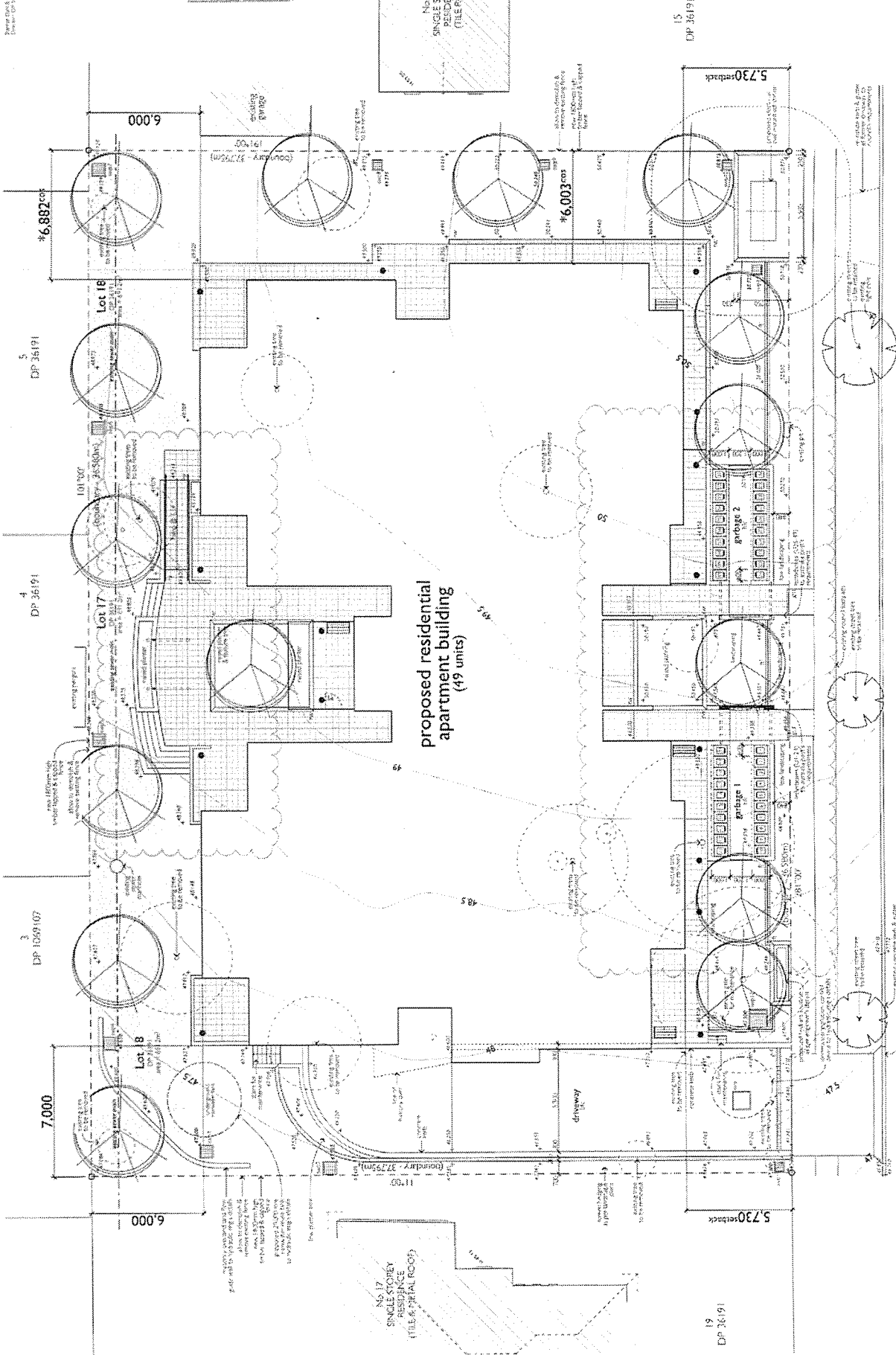


Project: Wentworth Community Housing
 Date: 15 APR 2015

RECEIVED
 STAGI
 15 APR 2015
 PENINSULA CITY COUNCIL



proposed residential apartment building (49 units)

01 site & external works plan
 1/100

philip street

- Legend:**
- 1. 200-year storm
 - 2. 100-year storm
 - 3. 50-year storm
 - 4. 25-year storm
 - 5. 10-year storm
 - 6. 5-year storm
 - 7. 2-year storm
 - 8. 1-year storm
 - 9. 6-month storm
 - 10. 3-month storm
 - 11. 15-day storm
 - 12. 7-day storm
 - 13. 2-day storm
 - 14. 1-day storm
 - 15. 6-hour storm
 - 16. 3-hour storm
 - 17. 1-hour storm
 - 18. 30-minute storm
 - 19. 15-minute storm
 - 20. 5-minute storm
 - 21. 2-minute storm
 - 22. 1-minute storm
 - 23. 30-second storm
 - 24. 15-second storm
 - 25. 5-second storm
 - 26. 2-second storm
 - 27. 1-second storm

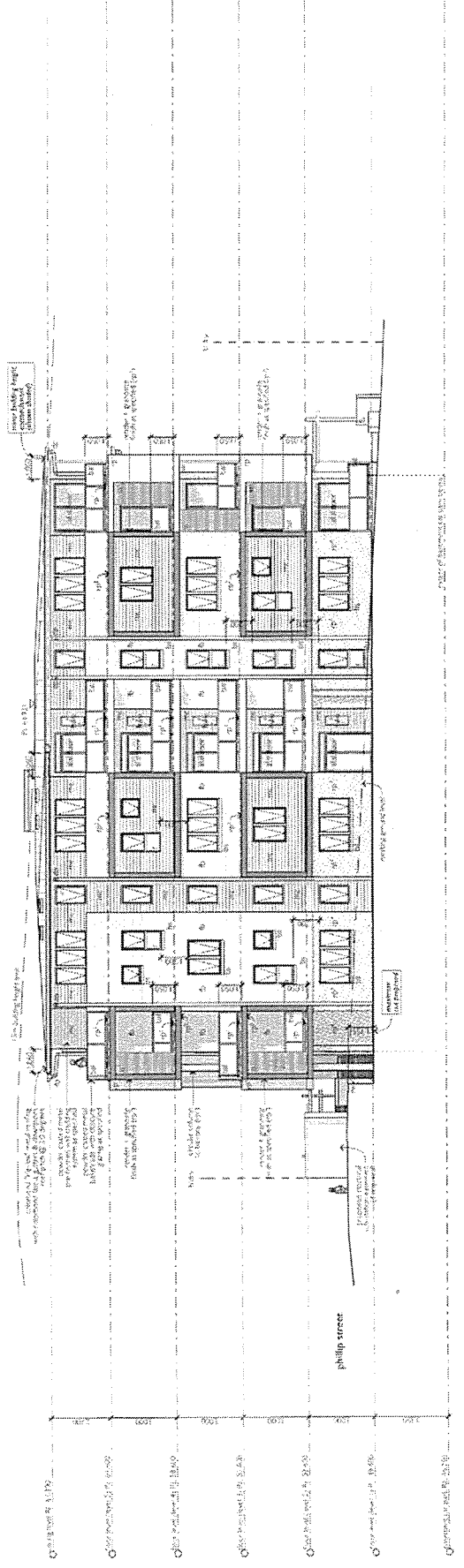
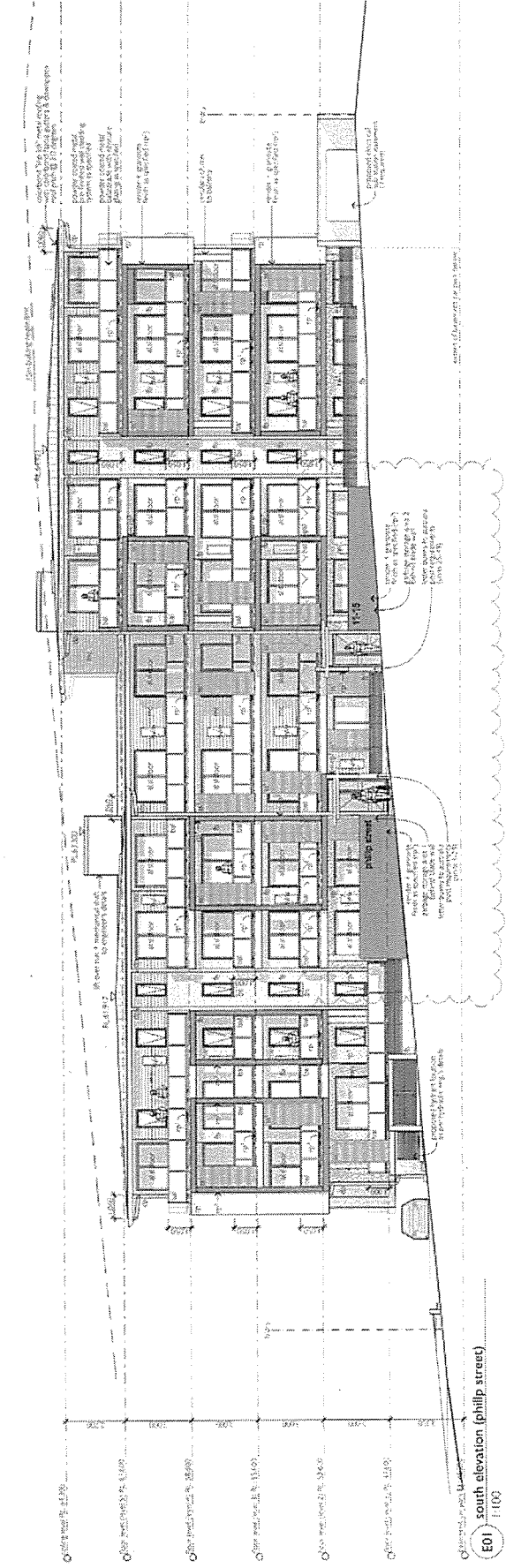
wentworth community housing
 residential apartment building +
 basement car parking
 11-12 philip street, manly, NSW
 site & external works plan
 job number: 1765.14
 A01



Author:	DAH
Checked:	DAH
Date:	15/04/15
Scale:	1/100
Sheet:	12
Project:	1765.14
Client:	Wentworth Community Housing

stano | dahl architects

- Legend**
- 1. External wall
 - 2. External window
 - 3. External door
 - 4. External door frame
 - 5. External door threshold
 - 6. External door sill
 - 7. External door lintel
 - 8. External door jamb
 - 9. External door stop
 - 10. External door handle
 - 11. External door lock
 - 12. External door keyhole
 - 13. External door pull
 - 14. External door push
 - 15. External door latch
 - 16. External door strike
 - 17. External door bolt
 - 18. External door pin
 - 19. External door wedge
 - 20. External door shim
 - 21. External door seal
 - 22. External door weatherstripping
 - 23. External door gasket
 - 24. External door sweep
 - 25. External door threshold cap
 - 26. External door sill cap
 - 27. External door jamb cap
 - 28. External door stop cap
 - 29. External door handle cap
 - 30. External door lock cap
 - 31. External door keyhole cap
 - 32. External door pull cap
 - 33. External door push cap
 - 34. External door latch cap
 - 35. External door strike cap
 - 36. External door bolt cap
 - 37. External door pin cap
 - 38. External door wedge cap
 - 39. External door shim cap
 - 40. External door seal cap
 - 41. External door weatherstripping cap
 - 42. External door gasket cap
 - 43. External door sweep cap
 - 44. External door threshold cap
 - 45. External door sill cap
 - 46. External door jamb cap
 - 47. External door stop cap
 - 48. External door handle cap
 - 49. External door lock cap
 - 50. External door keyhole cap
 - 51. External door pull cap
 - 52. External door push cap
 - 53. External door latch cap
 - 54. External door strike cap
 - 55. External door bolt cap
 - 56. External door pin cap
 - 57. External door wedge cap
 - 58. External door shim cap
 - 59. External door seal cap
 - 60. External door weatherstripping cap
 - 61. External door gasket cap
 - 62. External door sweep cap
 - 63. External door threshold cap
 - 64. External door sill cap
 - 65. External door jamb cap
 - 66. External door stop cap
 - 67. External door handle cap
 - 68. External door lock cap
 - 69. External door keyhole cap
 - 70. External door pull cap
 - 71. External door push cap
 - 72. External door latch cap
 - 73. External door strike cap
 - 74. External door bolt cap
 - 75. External door pin cap
 - 76. External door wedge cap
 - 77. External door shim cap
 - 78. External door seal cap
 - 79. External door weatherstripping cap
 - 80. External door gasket cap
 - 81. External door sweep cap
 - 82. External door threshold cap
 - 83. External door sill cap
 - 84. External door jamb cap
 - 85. External door stop cap
 - 86. External door handle cap
 - 87. External door lock cap
 - 88. External door keyhole cap
 - 89. External door pull cap
 - 90. External door push cap
 - 91. External door latch cap
 - 92. External door strike cap
 - 93. External door bolt cap
 - 94. External door pin cap
 - 95. External door wedge cap
 - 96. External door shim cap
 - 97. External door seal cap
 - 98. External door weatherstripping cap
 - 99. External door gasket cap
 - 100. External door sweep cap



wentworth community housing
 residential apartment building +
 basement car parking
 11-15 philip street, auckland, new
 zealand
 elevations (sheet 1 of 2)
 1765.14 A09
 1/2

station | dahl architects
 4, 5, 6, 7, 8, 9, 10, 11, 12, 13, 14, 15, 16, 17, 18, 19, 20, 21, 22, 23, 24, 25, 26, 27, 28, 29, 30, 31, 32, 33, 34, 35, 36, 37, 38, 39, 40, 41, 42, 43, 44, 45, 46, 47, 48, 49, 50, 51, 52, 53, 54, 55, 56, 57, 58, 59, 60, 61, 62, 63, 64, 65, 66, 67, 68, 69, 70, 71, 72, 73, 74, 75, 76, 77, 78, 79, 80, 81, 82, 83, 84, 85, 86, 87, 88, 89, 90, 91, 92, 93, 94, 95, 96, 97, 98, 99, 100

NO.	REVISION	DATE	BY	CHECKED
1	ISSUED FOR TENDER	17/06/14	AD	AD
2	ISSUED FOR CONSTRUCTION	17/06/14	AD	AD

Scale: 1:100
 Date: 17/06/14
 Drawn by: AD
 Checked by: AD

wentworth
 community housing